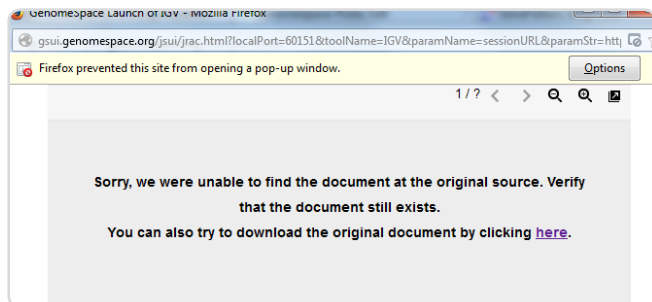


Managing Pop Up Blockers

For optimal use of this course pop-up blockers may need to be turned off. From time to time a user may click on a link and it appears nothing happens. Depending on your browser, a closer look will show a small icon in the address bar such as this example from Chrome:

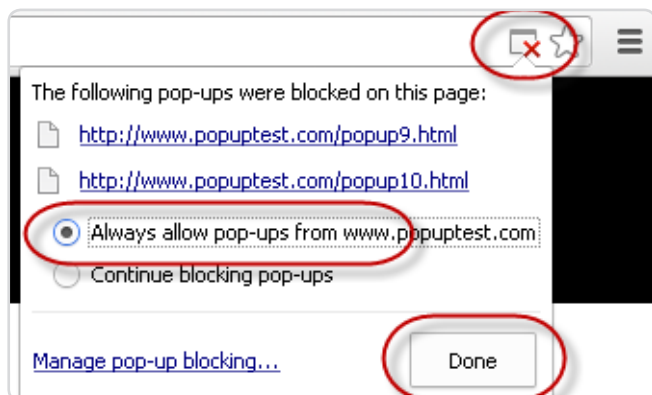


or an indicator bar as seen in this example from Firefox:



Edge, Safari and Internet Explorer act in a similar way.

Clicking on this pop-up indicator will provide a menu which will allow you to accept pop-ups from the site similar to this image:

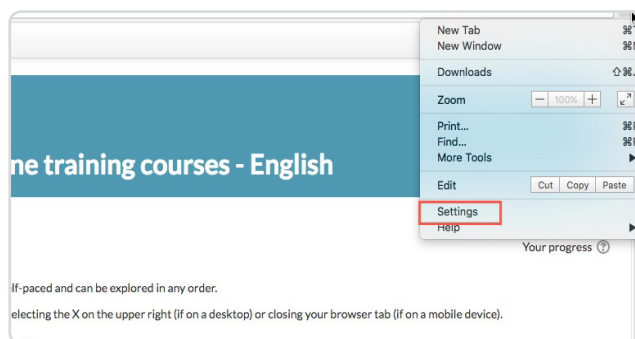


If you need to or prefer to allow pop-ups using your browser settings you can use your browsers Help menu to see the most current instructions by searching for popup.

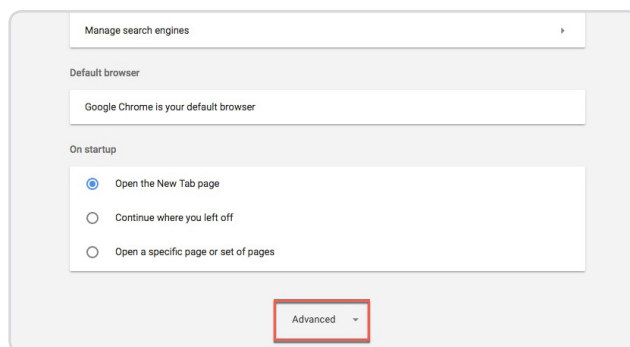
Below are screen shots of where to find the settings for several common browsers.

Chrome

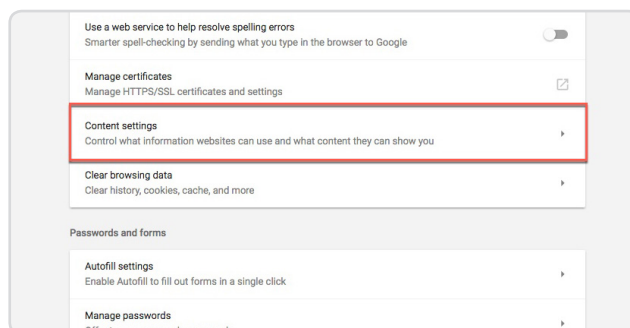
1. From the menu (indicated by three small dots in the upper right of the window), select **Settings**.



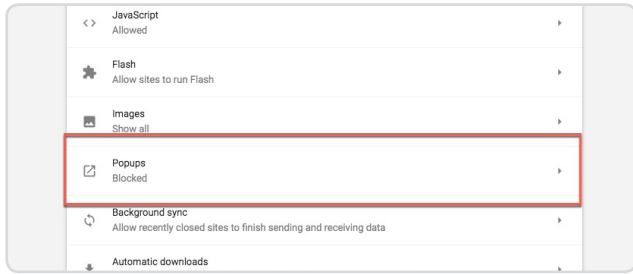
2. From Settings choose **Advanced**.



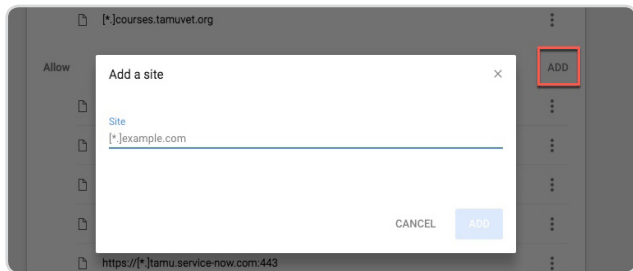
3. From the Advanced window choose **Content Settings**.



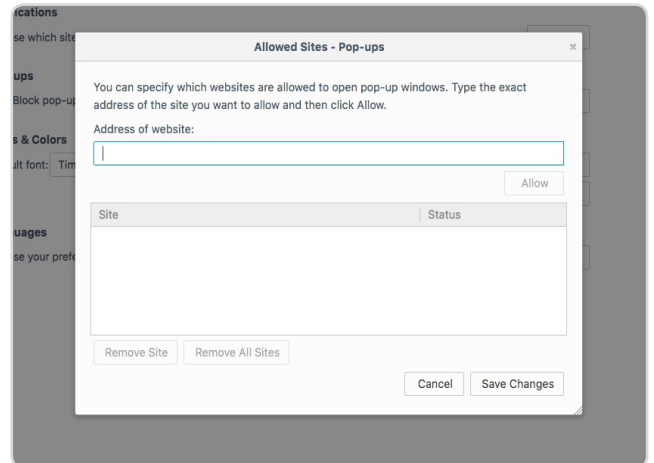
4. Choose **Popups**.



5. Click the **ADD** link and enter <https://moodle.cvm.tamu.edu>, then click the **ADD** button.

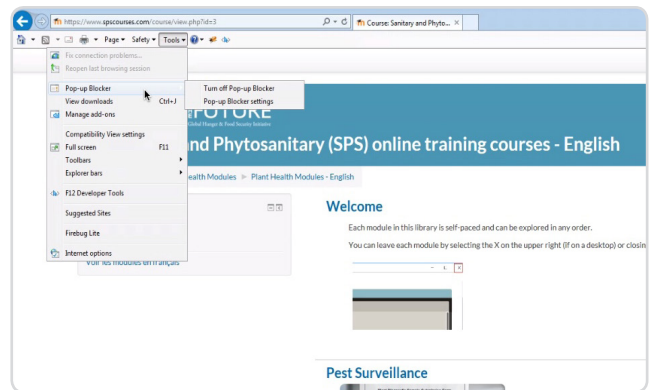


3. Enter <https://moodle.cvm.tamu.edu> in the address bar and click **Save Changes**.

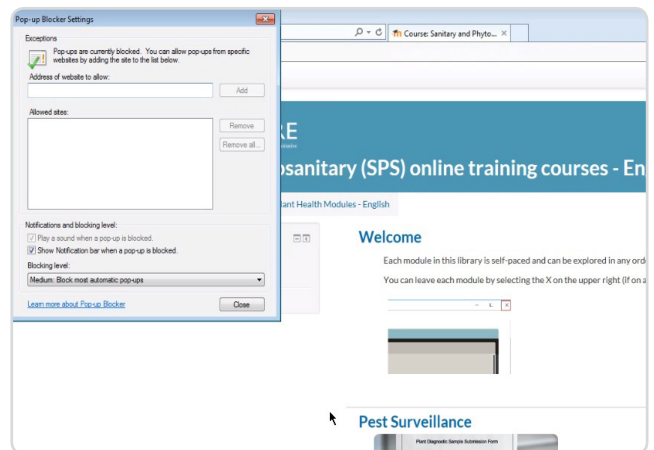


Internet Explorer

1. From the Tools menu, highlight **Pop Up Blocker** and choose **Settings**

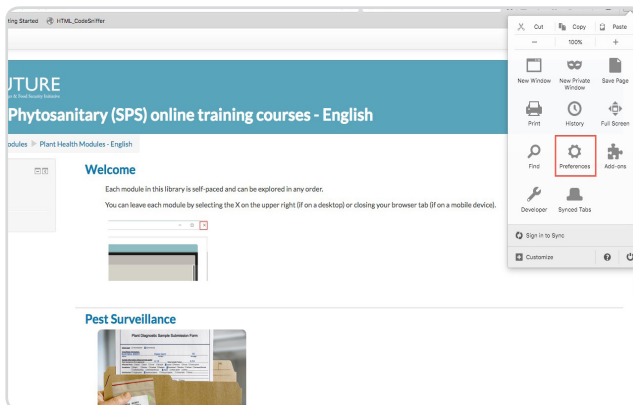


2. In the Settings window add <https://moodle.cvm.tamu.edu> and click the **Add** button.

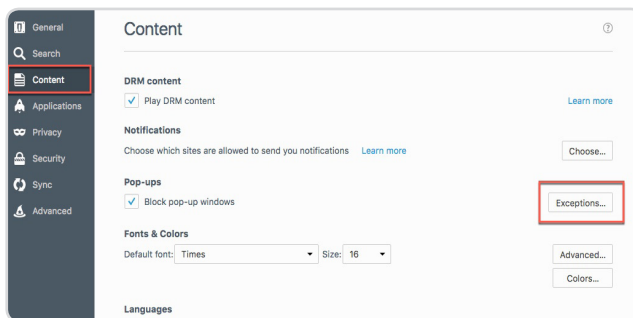


Firefox

1. From the menu choose **Preferences**.

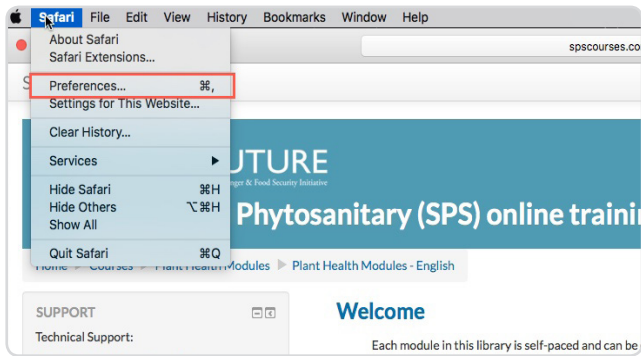


2. Choose the **Content** option and **Pop-ups Exceptions**.

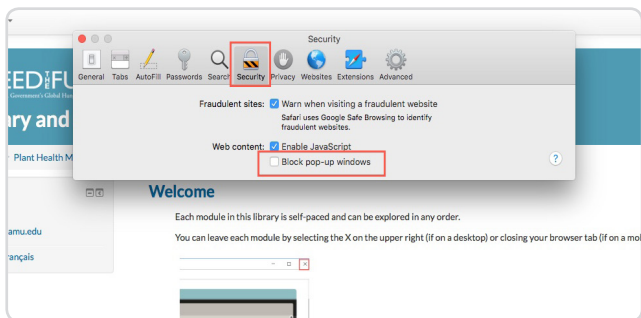


Safari

1. From the main Safari menu choose **Preferences**.



2. From the menu choose the **Security** tab and uncheck the Block pop-up windows check box.



Please note you cannot add exceptions, un-checking this box will turn off pop-up blockers for all sites.